

# CARRIER ETHERNET FUNDAMENTALS

## OVERVIEW

This course is designed for managers and technicians who are new to Ethernet or Carrier Ethernet, or for those that need to reinforce their knowledge of advanced network services. Topics include networking, networking protocols and services with a focus on Ethernet networks and their properties. Current transport networks and the evolution to Carrier Ethernet will be covered in detail. Proper terminology and the reason for benchmarks and Service Level Agreement (SLA) testing will be explored.

The course is structured to focus on the following topic areas:

- Defining Carrier Ethernet
- Networking Basics Including: Ethernet; Networking Topologies; Network Types; & Network Devices
- Network Models & Protocols: OSI Networking Model; TC/IP Networking Model
- Carrier Ethernet Including: Metro Ethernet Forum (MEF); Service Types; & Service Profiles
- Compliance Testing
- Performance Issues

## OBJECTIVES

At the conclusion of the course, participants will be able to:

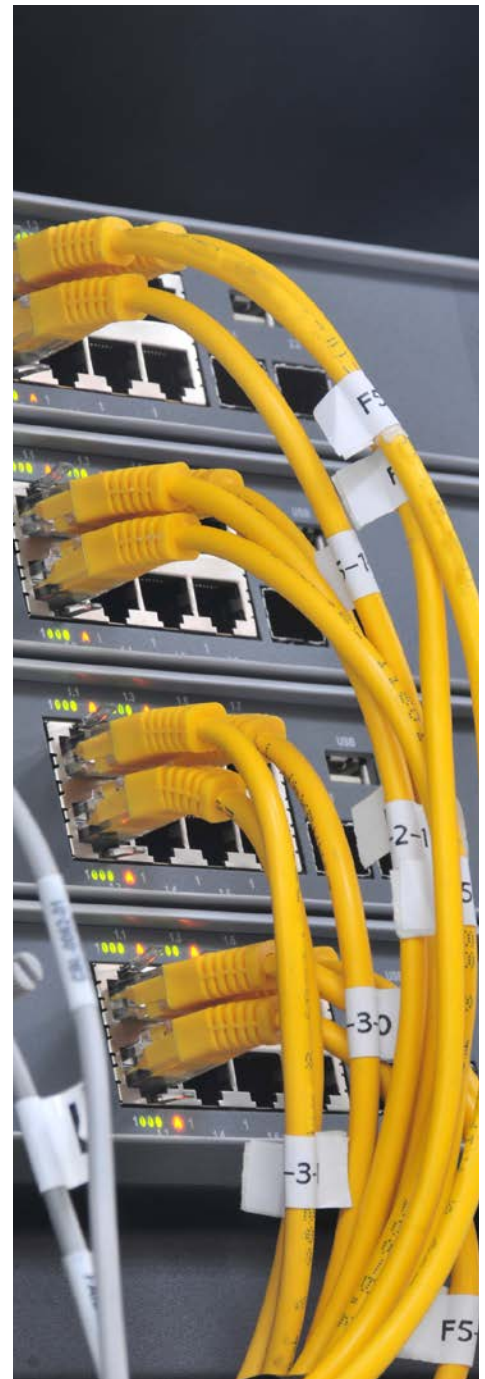
- Demonstrate working knowledge of network basics including physical aspects, logical/virtual networks, Local Area Networks, Wide Area Networks and OSI Protocols.
- Understand Ethernet concepts including its history, standards, architecture, frames, access, protocols, encapsulation, media and network.
- Describe the transport of Ethernet services over Carrier Ethernet.
- Understand the process of Carrier Ethernet Networks and MEF (Metro Ethernet Forum) Ethernet services.
- Understand service activation testing including benchmarks and SLA (Service Level Agreement) testing.

## FORMAT

Carrier Ethernet is a two-day, 16-hour program. The course content is instructor-led and presented in an interactive, learner-centered facilitation.

## BENEFITS

- Attendees develop the skills to prepare them to understand the purpose and functions related to the implementation and delivery of a Carrier Ethernet service.
- Attendees learn the value of advanced Ethernet Services and the need for Service Level Agreements and testing.



THE SAGE GROUP

PHONE 877-697-2434  
FAX 877-697-2434  
WWW.THESAGEGRP.COM